

tsm
Doctoral Programme

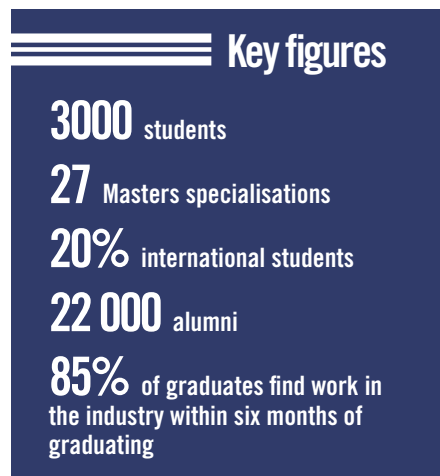


TOULOUSE SCHOOL OF MANAGEMENT DOCTORAL PROGRAMME

Toulouse School of Management (TSM) was founded in 1955, and is a part of the **University of Toulouse - Capitole 1**. Specialisations include **business administration, accounting, finance, marketing, HR management and strategy**. **English-taught programs** are offered at Bachelor's, Master's and PhD levels. TSM combines the strengths of a **private business school with the benefits of a public university**. **A top-quality academic** and professional education ensures employability directly after graduation. Thanks to TSM's extensive international network and numerous partner universities worldwide, we provide **exceptional international opportunities** to our students.

Our motto **"The path ahead"** symbolises both the future that awaits TSM students and the path that will lead them to become **socially responsible, enterprising managers**.

The TSM campus is located **in the heart of Toulouse**, "la Ville rose" (the Pink City). Appreciated for its quality of life, Toulouse is the economic lung of Southwestern France, and a vibrant European **metropolis focused on research and innovation**. An ideal setting to study and broaden one's horizons.



The **European Foundation for Management Development (EFMD)** is the **premier accreditation body for European business and management schools**. Awarded only after a rigorous review and auditing process conducted by higher education and management professionals, this label substantiates TSM's training programme's academic excellence, practical usefulness, international openness, ethics, and social responsibility.



Developed by **EFMD** and **FNEGE**, the **Business School Impact System (BSIS)** is the first comprehensive impact assessment tool for business and management schools. It identifies both the tangible and intangible benefits TSM brings to its local environment. Being awarded The BSIS label confirms the school's solid and positive anchoring in the city of Toulouse and the Occitanie region.



The University of Toulouse 1 Capitole proudly displays the three-starred label **"Welcome to France Award,"** earned for our international outreach and, more particularly, the quality of the hospitality offered to our international students.

Word of Dean



Hervé PENAN

TSM Doctoral Programme is a formative, rich and intense experience. Our goal is to prepare our doctoral candidates to engage in **cutting-edge research** and create the **most favorable conditions for their integration into the international academic community**.

Faculty members are at the forefront of research in their field. They work to develop **exciting research programmes** that address important issues in business and society through **deep engagement with the firms and organisations** tackling these problems. We strongly believe that quality research in management science requires both **disciplinary specialization and a broad intellectual curiosity** with wide-ranging understanding and perspective.

History

The first Ph.D. thesis in Management at the University of Toulouse 1 Capitole was defended in **1977**. Since 2006, the Toulouse School of Management Doctoral Programme (TSM-DP) has been accredited by the French Ministry for Higher Education and Research. Since 2014, it adopted a curriculum design that meets **international standards**. The programme is now taught **entirely in English**.

Word from the Programme Director



Marion FORTIN

Being a part of TSM DP means **contributing to management science on a global scale**. TSM DP is a **boutique programme** for both experienced and prospective researchers to explore their interests and gain **practical scientific skills**. We value **ethics, rigour, respect, excellence and professionalism**.

By joining TSM DP, you will be a part of a **small group of select and motivated students coming from all over the world**. Our faculty members will **work directly with you as mentors**. You will collaborate on research projects with your professors, refine your research abilities, and expand your understanding of your chosen topic.

Throughout the programme, you will receive **thorough theoretical and methodological training that allows you to develop your own programme of research**. For example, our researchers contribute to **finding important answers** to questions about our relationship with technology, justice at the workplace, the globalisation process, sustainable finance, knowledge transfer, and many other exciting topics.

Academic environment

The programme unites the three research teams based in Toulouse, namely **TSM Research** (UMR CNRS* 5303, Toulouse Capitole University), **LGCO** (Laboratoire Gouvernance et Contrôle Organisationnel, Research Unit 7416, Université Paul Sabatier) and **TBS Research Centre** (Toulouse Business School). The TSM Doctoral Programme currently can count on approximately **110 full-time faculty members** to provide doctoral supervision on various research topics.

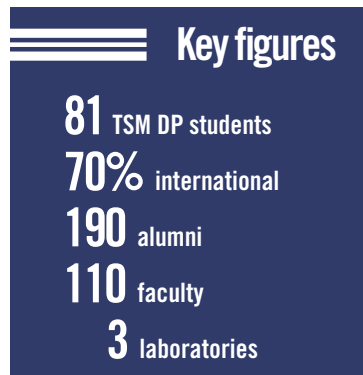
TSM Doctoral Programme provides an **international and inclusive** environment to foster research expertise. The first two years are dedicated to **formal research training courses** (lectures, seminars, workshops and meetings). Instruction is conducted **on-site** at our campus located in the center of Toulouse. While full-time presence in Toulouse is not necessary during all stages of the programme, Ph.D. students **must come to Toulouse to take classes and participate in events**. At the same time, unlike many other Ph.D. programmes, the TSM Doctoral programme is **flexible**, allowing you to choose your research topic, supervisor and research group.

A comprehensive programme

TSM Doctoral Programme is a **five-year programme**, and generally, students complete their Ph.D. in under five years. The first year, **Master of Science (MSc)**, serves as a basis for **doctoral contract selection and the transition into the second year is conditional**. To maintain a culture of collaboration throughout the programme, there are typically **20-30 students** who enter into the program's first year across all five disciplines.

First year

The **goal of the first year** of the Doctoral Programme is to provide students with the quantitative, analytical and theoretical tools for a **successful academic or research-oriented career**. The students' research phase begins in March of the first year. Most students will start to **define their core research interests** and **team up with a supervisor** around this time. All students who successfully complete the first year of the Doctoral Programme are awarded a MSc degree. At this time, a student may decide not to pursue a doctoral degree, and they may exit the programme with their MSc degree.



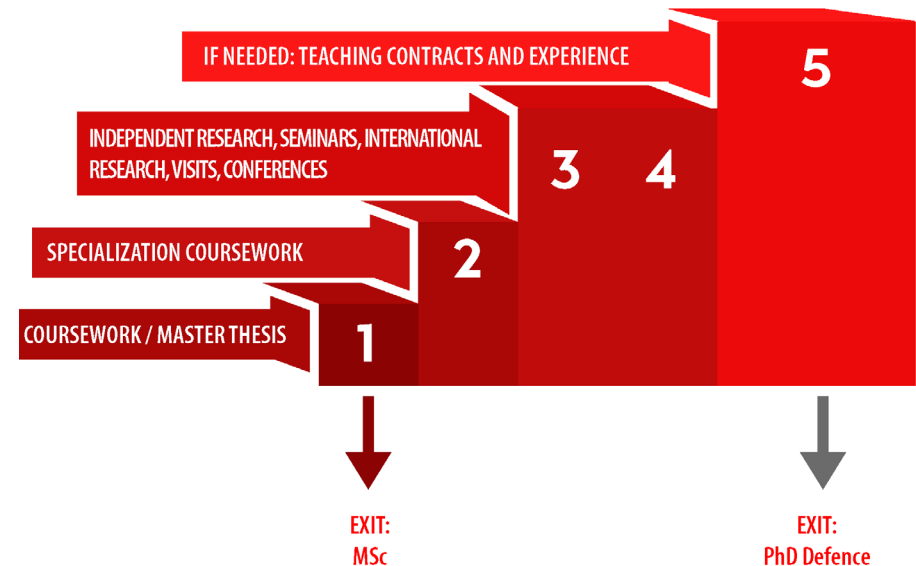
Transition to second year

Students who wish to continue towards their Ph.D. beyond the MSc year, can apply for one of approximately **10 annual University of Toulouse Capitole (UT1) doctoral contracts** that finance three years of Ph.D. work (MPhil 1-2-3). The doctoral contracts are awarded based on academic merit and research project suitability.

Alternatively, students continuing into the second year can secure **other funding**, including work-study arrangements for Ph.D. students such as **CIFRE***. During the second year (MPhil 1) of the programme, students develop more deeply their research ideas, theoretical models, methodology, and research protocol, while working closely with their academic advisors. These two years (MSc and MPhil) of intensive course work provide **a solid foundation** on which students can build their thesis project.

From the second year

From the second year (MPhil 1), most students also gain **pedagogical experience by tutoring/teaching courses at the Bachelor's and Master's levels**. In addition, **financial support for conferences and research visits** ensures that students can progress under excellent conditions and **fully integrate international research networks** in their field. **Years 3 (MPhil 2) and 4 (MPhil 3)** of the Doctoral Programme are dedicated to **original research and developing a Ph.D. dissertation**. Some students require an additional **fifth year** to finish the Ph.D. dissertation, in which case a part-time teaching contract is generally signed with the University of Toulouse 1 Capitole (**ATER contract**).



With the support of their supervisor, this training immerses Ph.D. candidates in **all aspects of academic life**. Both the pedagogical and the administrative teams are committed to delivering **high-quality teaching** and **an exceptional working environment** for students. A student should expect that the typical workload necessary to produce these results is between **1,500 and 1,800 hours (38-45 work weeks)** for an academic year.

*CNRS - The French National Centre for Scientific Research (French: Centre national de la recherche scientifique, CNRS) is the French state research organisation and is the largest fundamental science agency in Europe.

*CIFRE stands for Industrial Agreement of Training through Research (convention industrielle de formation par la recherche).

Year 1 Master of Science				
ACCOUNTING	FINANCE	HRM/OB	MARKETING	STRATEGY
core courses				
LEARNING AND PRACTICE IN RESEARCH MANAGEMENT SCIENCE ENGAGING WITH THE SCIENTIFIC LITERATURE INTRODUCTION TO QUALITATIVE RESEARCH INTRODUCTION TO QUANTITATIVE RESEARCH INTRODUCTION TO EXPERIMENTAL RESEARCH				
track specific courses				
RESEARCH DESIGN & ISSUES QUANTITATIVE RESEARCH QUALITATIVE RESEARCH	ASSET PRICING & FINANCIAL MARKETS CORPORATE FINANCE & FINANCIAL INTERMEDIATION PERSPECTIVES IN FINANCE	RESEARCH PROCESS & DESIGN QUANTITATIVE METHODS QUALITATIVE & EXPERIMENTAL METHODS	THEORIES & HOT TOPICS ADVANCED METHODS PERSPECTIVES IN MARKETING	RESEARCH PROCESS & DESIGN ADVANCED METHODS PERSPECTIVES IN STRATEGY
practitioner-oriented courses				
FINANCIAL REPORTING & EVALUATION MANAGEMENT CONTROL SYSTEMS AUDIT, INTERNAL CONTROL & RISK MANAGEMENT CROSS-CULTURAL & CHANGE MANAGEMENT	FINANCIAL ECONOMETRICS ECONOMICS FOR FINANCE PSYCHOLOGY FOR FINANCE DERIVATIVES	OB & LEADERSHIP ORGANIZATIONAL CHANGE & DEVELOPMENT	INNOVATION, NEW TECHNOLOGY ACCEPTANCE MODEL CUSTOMER ENGAGEMENT & EMPOWERMENT	ADVANCED STRATEGY & INTERNATIONAL BUSINESS DEVELOPMENT INTERNATIONAL MANAGEMENT CONTROL CROSS CULTURAL MANAGEMENT & INTERNATIONAL HRM

RESEARCH TRAINING SEMINARS

Year 2 Master of Philosophy				
core courses				
ADVANCED QUANTITATIVE METHODS ADVANCED QUALITATIVE METHODS INTELLECTUAL PROPERTY RIGHTS				
track specific courses				
ADVANCED METHODS HOT TOPICS IN ACCOUNTING AUDITING AND MANAGEMENT CONTROL RESEARCH WRITING, REVIEWING & PUBLISHING	ASSET PRICING AND FINANCIAL MARKETS CORPORATE FINANCE & FINANCIAL INTERMEDIATION	ADVANCED METHODS HOT TOPICS ON HR/OB WRITING, REVIEWING & PUBLISHING	ADVANCED METHODS HOT TOPICS ON MARKETING RESEARCH WRITING, REVIEWING & PUBLISHING	ADVANCED METHODS HOT TOPICS ON STRATEGY WRITING, REVIEWING & PUBLISHING

RESEARCH TRAINING SEMINARS

TEACHERS' PEDAGOGICAL PRACTICES (15-21 hours)

Year 3-4-5 Master of Philosophy				
DOCTORAL DISSERTATION RESEARCH TRAINING SEMINARS MY THESIS IN 180 SECONDS (3rd year only) TEACHING/ ENGAGING IN DIALOGUE WITH ORGANISATIONS (3rd & 4th year - 64 hours, 5th year - 96 hours) HIGHLY ENCOURAGED PARTICIPATION IN INTERNATIONAL CONFERENCES (funding provided) HIGHLY ENCOURAGED RESEARCH VISIT ABROAD (usually funded)				

Upon completion of the programme, students should be able to:

- Recognise and evaluate original problems based on a theoretical foundation.
- Develop and apply appropriate, innovative and persuasive methods for research projects.
- Conduct critical and reflexive analysis of research findings, impacts and outcomes.
- Provide relevant recommendations for practical problems encountered by organisations.
- Actively work in an inclusive, respectful and constructive way with supervisors, researchers and their peers both within the institution and the wider international research community.
- Communicate effectively in both written and oral formats with a range of audiences in formal and informal settings through a variety of different techniques and media.
- Understand and apply the codes of conduct and guidelines for scientific rigour, integrity and ethics.
- Teach and support student learning at the undergraduate and graduate levels.



The courses are subject to change from one year to another and the curriculum is not definitive.

Accounting, Auditing and Management Control

- Management Control Systems
- Environmental Accounting
- Audit
- Industrial risks
- Performance Management System
- Service sector
- Public Management
- Corporate Valuation
- Mergers and Acquisitions
- Governance
- Sustainability Accounting and Reporting
- Accounting History
- Accounting Profession
- Management of financial teams and talent management
- Critical Accounting

Human Resource Management and Organizational Behaviour

- Human Resource Management
- International Human Resources Management
- Change Management and Innovation
- Global Leadership
- Human Resources Climate
- Career Management
- Knowledge Management and Innovation
- Organisational Behavior
- Organisational Justice
- Social Emotions
- Discrimination
- Behavioral Ethics
- HR and Artificial Intelligence (AI)
- Corporate Social Responsibility (CSR)
- Occupational Health

**Finance**

- Household Finance
- Corporate Finance
- Asset pricing and asset management
- Market Microstructure
- Banking
- Venture Capital and Entrepreneurship
- FinTech, Blockchains and Cryptocurrencies
- Industrial Organisation
- Mathematical Finance
- Experimental Finance
- Corporate Social Responsibility and Green Finance

Marketing

- Consumer Behavior
- Social Norms & Social Influence
- Consumer Identity
- Evolutionary Psychology
- Gendered Marketing
- Health Behavior & Food Behavior
- Status Marketing and Luxury Consumption
- Cross-Cultural Consumer Behavior
- Consumer Culture Theory
- Consumer Empowerment
- Ethics in Marketing & Consumer Well-Being
- Corporate Social Responsibility (CSR) and Irresponsibility (CSI)
- Ethical and Pro-Environmental Consumption
- Environnement/Climate Change

Strategy and International Management

- Managerial attention & cognition
- Business Models and Sustainability
- Corporate Governance
- Corporate Political Strategy
- Entrepreneurship
- Globalisation Process
- Innovation Strategy
- Inter-organisational Relationships
- International Business Strategy
- International Political Economy
- Justification
- Knowledge Management
- Mergers and Acquisitions
- Multinational Enterprises
- Organisational Ambidextrousness



TSM Research

Toulouse School of Management Research (TSM-R) is a joint research unit (JRU) of the University of Toulouse 1 Capitole (UT1)/CNRS with the mission **to create and disseminate high-quality scientific knowledge** within the principal five disciplines of management sciences:

- Accounting, Control, Auditing
- Finance
- Marketing
- Human Resources Management / Organizational Behaviour
- Strategy

TSM-Research is committed to rigorous, scientific research, guaranteed by **publications in the best international journals**. The laboratory studies the most current developments and emerging trends, and researchers offer decision-makers analytical tools. TSM-R is affiliated with the University Toulouse 1 Capitole and the TSM Doctoral Programme.

TSM-R was created on **27 April 2009**. The unit is directed by **Professor Karim Mignonac**, assisted by a deputy director, **Professor Sandra Laporte**. TSM-R is today one of the few CNRS laboratories specifically dedicated to the field of **management sciences** (with the GREGHEC at HEC Paris and the DRM at the University of Paris Dauphine).



TBS Research

Toulouse Business School is a private school widely recognized by the international community and accredited by **AACSB, AMBA & EQUIS accreditations**. TBS Education is one of the rare French business schools to associate itself with a Doctoral Management School. TBS professors are highly committed to **new knowledge production and collaboration**. At TBS, the commitment is not only to provide an intellectually stimulating environment where you can excel academically but also to make an impact in your community through innovative research.

TBS Research Centre has five disciplinary laboratories:

- Accounting, Control, and Performance Management
- Entrepreneurship and Strategy
- Finance, Economics, and Econometrics
- Social & Innovation Marketing
- Work, Employment, and Health

and three centers of excellence:

- CSR & Sustainable Development
- Artificial Intelligence & Business Analytics
- Aeronautics & Space



LGCO

The LGCO (Laboratoire de Gouvernance and Control Organisationnel) is a research unit of the University of Toulouse 3 Paul Sabatier. The LGCO laboratory favours an interdisciplinary perspective and approach through collaboration between researchers from different management sub-disciplines.

LGCO's research focuses on three themes:

- Antropogenic Management
- Information & Management
- Health Management

International Academic Partnerships

Our Diversity

ENGAGE network

University of Toulouse 1 Capitole is a member of the European University **ENGAGE.EU**. ENGAGE.EU is an alliance of leading European universities in **business, economics, and the social sciences**, which aims to provide European citizens the set of skills and competences needed to tackle major societal challenges. This alliance provides **many opportunities for research collaborations, networking and teaching exchanges**. For example, next year our university is hosting a think tank for ENGAGE researchers, and in April 2023 TSM will be organising a workshop for junior scholars and doctoral students from all of the ENGAGE partner universities.



The ENGAGE.EU European University unites nine member universities:

- University of Mannheim, Germany
- Luiss Libera Università Internazionale degli Studi Sociali Guido Carli, Rome, Italy
- NHH Norwegian School of Economics, Bergen, Norway
- Tilburg University, The Netherlands
- University of National and World Economy, Sofia, Bulgaria
- University of Toulouse 1 Capitole, France
- WU Vienna University of Economics and Business, Austria
- Hanken School of Economics, Helsinki, Finland
- Ramon Llull University, Barcelona, Spain

Bilateral agreements LUMS-TSM-WHU

To foster international doctoral training and promote academic mobility, the TSM DP has established two agreements with Lancaster University Management School (LUMS) in the UK and WHU Otto Beisheim School of Management in Germany - both EQUIS accredited. Together, the three partners organise workshops that provide networking and feedback opportunities for doctoral students.



Research visits

TSM Doctoral Programme provides its students the opportunity to **conduct research visits abroad or in France**, with periods ranging from 5 days up to 12 months. Research visits are an excellent opportunity to enhance a **Ph.D. student career, network with other researchers worldwide, and develop new skills**. The experience in another country often brings new research collaborations, publications, and career opportunities. Students can learn about doctoral mobility possibilities during dedicated sessions. Financial supports are available: **University of Capitale 1 (UT1), Erasmus +,**

specific agreements, and external scholarships. The grants are intended to finance research stays abroad necessary for the work of doctoral students in **the framework of their thesis** (excluding conferences and seminars abroad). An Erasmus+ agreement between UT1 is required to receive financial support for short stays (5-30 days).

For other cases, the minimum stay is two months, and Ph.D. students are only required to have **an invitation letter from the hosting university**.

Academic visits of TSM DP Ph.D. students from previous years

Argentina

- Universidad Nacional de Cuyo

Canada

- Concordia University
- Dalhousie University
- HEC Montreal
- Queen's University
- Telfer School of Management
- Université Laval
- UQAM

Colombia

- La Salle Universidad

Danemark

- Copenhagen Business School

Finland

- Hanken School of Economics
- Oulu Business School
- Turku School of Economics

France

- EM Lyon Business School

Germany

- Karlsruhe Institute of Technology
- Kiel Institute for the World Economy

Ireland

- University College Dublin

Italy

- Saint'Anna School of Advance Studies of Pisa

Japan

- Waseda Business School

Netherlands

- Rotterdam School of Management
- Tilburg University
- Tinbergen Institute
- UNU-MERIT

New Zealand

- The University of Auckland

Singapore

- National University of Singapore

Spain

- Universidad de Valencia

UK

- Birmingham Business School
- Lancaster University School of Management
- London Business School
- Royal Holloway University of London

USA

- Harvard University
- Manning School of Business
- MIT Sloan School of Management
- Northwestern University
- Temple University
- University of Arizona
- University of Cincinnati
- University of Southern California
- Western Michigan University
- Yale University

Conferences

Typically, **more than 40 Ph.D. candidates'** presentations at conferences are fully funded by our university per academic year. Most of these academic meetings are **international**. Our students present their work at **top international conferences** such as:

- **AAA** - American Accounting Association
- **AFM** - Association française du Marketing
- **AIB** - Academy of International Business, USA
- **AMA** - American Marketing Association, USA
- **AMS** - Academy of Marketing Science, USA
- **AOM** - Academy of Management, USA
- **CAAA** - Canadian Academic Accounting Association
- **e-HRM International Conference**
- **EAA** - European Accounting Association
- **EAWOP** - European Association of Work and Organisational Psychology
- **EGOS** - European Group for Organisational Studies
- **EMAC** - European Marketing Academy
- **EURAM** - European Academy of Management
- **ICSB** - International Council for Small Business
- **SIETAR** - Society for Intercultural Education, Training and Research





**Diana CASTRO
HERRERA**

Assistant Professor in
Accounting
University of Navarra

PhD in Accounting
2017-2021

"Climate Change Risk
Disclosures: Determinants and
Consequences"
Ecuador

Choosing the right topic for your Ph.D. dissertation is essential to its success. There is no point in putting all the time and effort into writing up your dissertation if you haven't done adequate research beforehand. It would be best if you chose a feasible, interesting, or academically sound topic to stand up in front of your supervisors, other academics, and members of the public at large.

It is precious that TSM Doctoral Programme provides time and excellent support during the first year of the programme to choose carefully the research project students want to work on over the next 3 to 4 years. When I started the programme,

I didn't know exactly which project would suit me best. For my Ph.D. thesis, my future supervisor suggested studying the emerging field of climate change and accounting - and so my journey began.

Faculty encourages you to attend high-ranking conferences such as American Accounting Association and European Accounting Association conferences. I participated in both. TSM Doctoral Programme funded my participation entirely, which led to excellent exposure of my research and helped me build a network with researchers around the world with similar interests.

program, I have colleagues from all over the world who will go to many different interesting places. There is an extra benefit for me, I think, being one of the very few people from the U.S. in an international program like this one vs. being in a program that is more U.S.-centric, even if it has a good number of students or faculty from other countries. Here it is the people from the U.S. who have to make the adjustments, and that in and of itself is a great lesson.

Holding a Ph.D. from the Toulouse School of Management means that I come from a truly international academic community. By virtue of this



**Karen KHANH
HUYNH**

Quantitative Researcher
Amundi Asset Management

PhD in Finance
2017-2021

"Formation and use of return
expectations in financial
decisions"
Vietnam

TSM has a friendly and welcoming atmosphere where people can grow academically. A weekly workshop is held for Ph.D. students in finance to present their findings in front of professors, allowing them to get feedback while being guided by experts in the field. Additionally, the TSM Doctoral Programme and Toulouse School of Economics organise weekly seminars with reputed researchers from around the world who come to Toulouse to present their work. These events provide opportunities for cross-cultural collaborations and new perspectives on your research. Teaching is also integral to being a Ph.D. student at TSM, and very

early in the first year of the Ph.D. contract, I started as a teaching assistant and later in the last two years, I became an instructor for a course in the master of finance.

The most important highlight of my Ph.D. at TSM is my semester research visit to the MIT Sloan School of Management in Cambridge, MA. During this period, I had the chance to discuss my work with Professor David Thesmar, one of the most outstanding contemporary researchers in finance. This research visit gave me access to such prestigious courses taught by the most reputable professors in the world.



Clark WARNER

Lecturer in Management and
Organizations Department
Boston University

Questrom School of Business
PhD in HRM, 2016-2021

"Influences on Dual-Process
Ethical Decision-Making and the
Development of Moral
Automaticity"
USA

I have received truly outstanding support throughout my journey, beginning of course with my spectacular advisor and continuing as a theme with the entire faculty and all of my colleagues. The doctoral students here are pretty devoted to helping each other succeed. Once any of us figures out how to accomplish something, we are quick to share. The support is also evident in the funding available for visiting other schools and attending conferences. We make it easy to network and encourage it.



There is a **single annual intake** in September. Teaching is distributed regularly over the course of the academic year.

The **first year** is structured in **three term periods**: September to December, and January to March. From March students then either work on their Master thesis or conduct a 6-months internship.

The **second year** is structured in **two periods**: September to December, and January to June.

At the end of the second year students present their current PhD plans and progress to date in front of a panel of academic committee.

2022-2023 University calendar

Date	Event
First weeks of July & beginning of September	Registration
29 August - 2 September	Welcome Week

Autumn semester

5 September - 17 December

5 September (Monday)	Beginning of classes
31 October (Monday) - 6 November (Sunday)	Autumn Break administrative office closed, no classes
1 November (Tuesday)	National Holiday - All Saints' Day
7 November (Monday)	Resume of classes
11 November (Friday)	National Holiday - Armistice Day
19 December (Monday) - 2 January (Monday)	Christmas Break administrative office closed, no classes
25 December (Sunday) 1 January (Sunday)	Christmas New Year

2022-2023 University calendar

Spring semester

3 January - end of March

3 January (Tuesday)	Beginning of classes
27 February (Monday) - 5 March (Sunday)	Winter Break administrative office closed, no classes
End of March	End of classes
10 April (Monday)	National Holiday - Easter Monday
24 April (Monday) - 1 May (Monday)	Spring Break administrative office closed
1 May (Monday)	National Holiday - Labour Day
8 May (Monday)	National Holiday - World War II Victory Day
18 May (Thursday)	National Holiday - Ascension Day
29 May (Monday)	National Holiday - Whit Monday or Lundi de Pentecôte
14 July (Friday)	National Holiday - Bastille Day
25 July (Monday) - 21 August (Sunday)	Summer Holidays administrative office closed



Our mission is to attract talented and motivated students. Therefore, admitted students do not have **any tuition fees to pay at any point in the programme**, as TSM Doctoral Programme offers a **full tuition fee waiver for all admitted**

students, which is applied to each year of the programme. Students are only required to pay an annual registration fee at the start of each academic year.



Students interested in continuing into the second year of the TSM Doctoral Programme after successful completion of the MSc can also secure **other methods of funding**, including the Eiffel grant, French Government scholarships for foreigners, foreign government scholarships, and CIFRE agreements.

All students who secure funding to begin the second year of the programme are also provided with a TSM laptop, and dedicated office spaces are available.

Additional funding opportunities for research activities include:

- International research visiting grants for periods going from 5 to 30 days and from 2 months to 12 months
- Registration fees, travel and accommodation funding for academic conferences
- Copy-editing before publication
- International academic job market support

YEAR	TUITION FEES	REGISTRATION FEE	FUNDING AVAILABLE
MSc, Year 1	Waived	€ 243	No
Year 2	Waived	€ 930	Yes
Year 3	Waived	€ 380	Yes
Year 4	Waived	€ 380	Yes
Year 5	Waived	€ 380	Yes

Doctoral contract (UT1)

The doctoral contract is a **specific employment contract for doctoral students**. The contract lasts for **3 years**. The doctoral contract is open to students from the second year of the TSM Doctoral Programme. In order to apply for the doctoral contract, **the student must meet high requirements in terms of research quality and grades from the first-year Master of Science**.

CIFRE contract (industrial agreement of training through research)

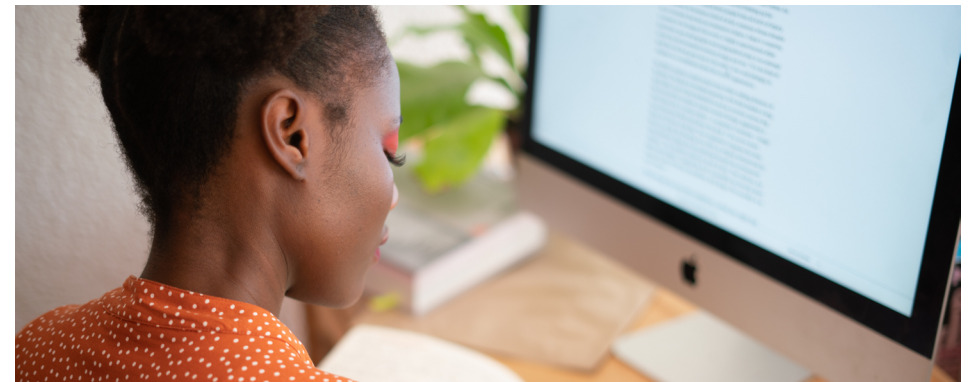
In CIFRE agreements, doctoral students prepare for their doctorate and conduct their research in a company. The students are **jointly supervised by both the academic thesis advisor and the company tutor**. They submit an annual progress report signed by both the supervisors to the ANRT (National Association for Research and Technology). CIFRE Ph.D. students benefit from **a CDI or CDD contract with the company and receive a salary**.

ATER contract (temporary teaching and research associate)

Available to doctoral students from **the fifth year of the Doctoral Programme (MPhil 4)**. It allows students to teach while preparing a thesis. The ATER contract can be renewed for one more year.

Additional contracts:

regional financing, ANR, Marie Curie, international contracts, etc.



Administrative team

Administrative Officer

dp.academicaffairs@tsm-education.fr
Office J320, opening hours 2-4 PM (Monday - Friday)
05 61 63 38 81

- Scheduling
- Registrations
- Enrollement
- Room bookings
- IT materials

Programme Officer

doctoralprogramme@tsm-education.fr
Office J320, opening hours 2-4 PM (Monday - Friday)
05 61 63 38 62

- Ph.D. thesis defence
- Funding questions
- International mobility
- Contracts

Track coordinators

Accounting, Auditing and Management Control



Marie Caussimont
marie.caussimont@tsm-education.fr
Office J312 (by appointment)
05 61 63 37 88

Finance



Matthieu Bouvard
matthieu.bouvard@tsm-education.fr
Office AF127 (by appointment)
05 61 12 85 62

Human Resource Management and Organizational Behaviour



Marion Fortin
marion.fortin@tsm-education.fr
Office J322 (by appointment)
05 61 63 38 73

Strategy and International Management



Audrey Rouziès
audrey.rouzies@tsm-education.fr
Office AF116 (by appointment)
05 61 63 56 57

Marketing



Sandra Laporte
sandra.laporte@tsm-education.fr
Office J313 (by appointment)
05 61 63 38 80

Student Delegates

The student delegate is the spokesperson for the class to the head of the programme and the administrative staff. They commit to represent their classmates and to report on any problems or difficulties students may encounter. They undertake to communicate to the class all the information given by the faculty and the administration.

Contacts

Conferences funding

Montserrat Vinolo
montserrat.vinolo@tsm-education.fr
Office J302 (by appointment)
05 61 63 38 64

Research visit / Mobility funding

Vincent Redaud
vincent.redaud@ut-capitole.fr
Office J.104 (by appointment)
05 61 63 35 46

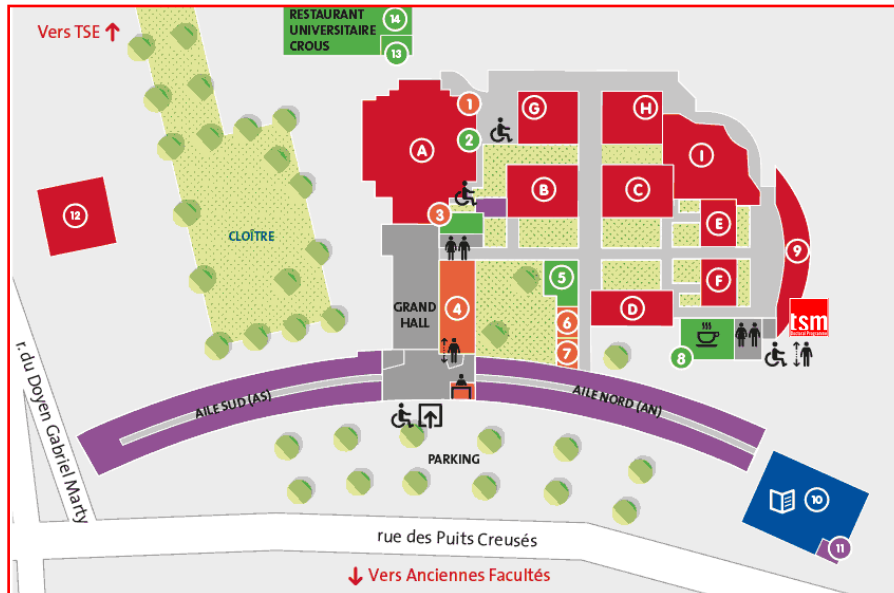
Teaching mobility

Agnès Tersou
agnes.tersou@ut-capitole.fr
J104.3 (by appointment)
05 61 63 35 43

Housing for international students

Nathalie Castex
nathalie.castex@ut-capitole.fr
J104.2 (by appointment)
05 61 63 39 25





ARSENAL

■ ACCUEILS

- Accueil général : Grand Hall [A]
- Guichet G [1]
- Accueil Sports [3]

■ ADMINISTRATION

- Cabinet de la Présidence : AR 35 (AS)
- Centre audiovisuel et multimédia / dTICE - CAM : AR 231 (AN)
- Direction des affaires juridiques et institutionnelles - DAJI : AR 41 bis (AS)
- Direction Du Patrimoine - DDP
 - Atelier de reprographie : sous-sol BU Arsenal (entrée par la rue de la cité administrative) [11]
 - Service du courrier : AR 42 bis (AS)
 - Service logistique : AR 36 (AS)
- Direction des Études et de la Sclarité - DES
 - Accueil étudiants handicapés / UTI Handicap : AR 31 (AN)
 - Bureau de la Vie Étudiante - BVE : AR 22 (AN)
 - Diplômes et Transferts : AR 116 (AN)
 - Sclarité administration et communication : AR 115 à 121 (AN)
 - Sclarité droit - licence : AR 16 à 18 ter et 25/27 (AN)
 - Sclarité droit - master : AR 123 à 127 et 133 à 137 bis (AN)
 - Sclarité informatique : AR 04, 04 bis et 07 (AN)
- Direction Générale des Services - DGS
 - Secrétariat : AR 39 (AS)
- Direction du Pilotage - DP : AR 32 (AS)
- Direction du Système d'information - DSI
 - Accueil, assistance informatique : AR 38 (AS)
- Direction de la Recherche - DR : AR 32 (AS)
- Direction des Ressources Humaines - DRH
 - Secrétariat AR 17 (AN)
- École de Notariat : AR 261 à 273 (AS)
- Pôle relations entreprises - SUJO-IP : AR 383 / 385 (AS)
- Projet innovation, orientation, insertion - SUJO-IP : AR 377 (AS)
- Service Commun des Relations Européennes et Internationales - SCREI : J 103 / 104 [9]

■ BIBLIOTHÈQUES - BU

- Bibliothèque Arsenal [10]
- Centre de Ressources en Langues (CRL) : rez-de-chaussée du bâtiment
- Bibliothèque Boutaric : AR 110 (AN)

■ COMPOSANTES

- Département des langues et civilisations - DLC : AR 223 (AN)
- École européenne de droit - ESL : AR 330 / 332 / 334 (AS)
- Faculté d'administration et communication : AR 341 (AN)
- Faculté de droit et sciences politiques : AR 201 (AN)
- Faculté d'informatique : AR 342.3 (AS)
- Institut de criminologie Roger Merle - ICRM : AR 247 (AN)
- Institut d'études judiciaires - IEJ : AR 249 (AS)

■ ÉQUIPES DE RECHERCHE

- Centre Toulousain d'histoire du droit et des idées politiques - CTHDIP : AR 204
- Institut de droit privé - IDP : AR 230 (AS)
- Institut du droit de l'espace, territoire et communication (IDETCOM) : AR 317 (AN)
- Institut Maurice Hauriou - IMH : AR 149.3

■ TSM-Research, TSM Doctoral Programme bâtiment J, 3e étage [9]

■ LIEUX DE FORMATION

- Amphithéâtres

[A] - Michel-Despax	[B] - Pierre-Hébraud
[C] - Montané-de-la-Roque	[D] - Pierre-Raynaud
[E] - Jacques-Mauray	[F] - Jean-Dauvillier
[G] - Paul-Ourliac	[H] - Amphi H
[I] - Achille-Mestre	[12] - Valade
- Salles de cours
- Salles et labos de langues
- Salle Informatiques en accès libre : AR 150 (AS)

■ LIEUX DE RÉUNION

- AR 030 (AS)
- AR 048 [7]
- Salle des thèses [6]
- Salle Gabriel Marty [4]

■ LIEUX DE VIE

- Cafétéria : rez-de-chaussée [8]
- Gymnase : sous-sol (AN)
- Restaurant des personnels CROUS [13]
- Restaurant universitaire CROUS [14]
- Salle G, salle des personnels : rez-de-chaussée, arrière amphi Michel Despax [2]
- Salon des enseignants [5]

[illegible][illegible]



TSM - Toulouse School of Management
2, rue du Doyen Gabriel Marty
31 042 Toulouse Cedex 9



Tél. +33 (0)5 61 63 56 00
tsm-doctoralprogramme.fr



#ToulouseSchoolofManagement